



**MOG**

10<sup>th</sup> of Ramadan

Catering Equipment

# MOG PRODUCT CATALOG

INDUSTRIAL KITCHEN PIONEER

# CONTENT

**01**  
ABOUT US

**02**  
VISION

**03**  
MISSION

**04**  
HOT LINE

**05**  
COLD LINE

**06**  
NEUTRAL LINE

**07**  
WASHING MACHINE

**08**  
KITCHEN MACHINES

**09**  
BRANCHES



INDUSTRIAL KITCHEN PIONEER

## ABOUT US

MOG 10th of Ramadan has always been a byword for *quality and reliability*. It blends together all the advantages of industrial and traditional manufacturing, which makes every piece of equipment unique.

All of them are built today with the same passion as in the early times.

SINCE  
1961 | 19547



## ABOUT US

The use of top-quality extra-thick, steel, with the attention to every detail throughout the production process are just some of the features that make MOG kitchens so unique.

### **SOLIDITY**

The choice of materials and the quality of construction give MOG kitchens their extreme reliability and durability, making them the perfect partner for every professional chef..

### **RELIABILITY**

The wide range of models means you can choose the solution for your own personal needs: From classic gas, electric ranges to refrigeration equipment through products for special purposes.

### **FLEXIBILITY**



## VISION

Our vision for MOG 10th of Ramadan is to continue our steady growth. As a proud Egyptian company, we envision great expansion opportunities across Africa and the MENA region. Being a family owned company with decades of experience, our goal is raise Egyptian production standards and remain revolutionaries in the industry. We aim to expand into the following countries:

- 1- Sudan
- 2- Libya
- 3- Algeria
- 4- Kenya
- 5- Rwanda

As pioneers in the industry, we take safety measures and procedures very seriously. One of our goals is to reach global industrial safety standards.



## MISSION

Since our inception in 1961, our mission has always been to satisfy our customers and build a legacy.

MOG's customers are partners, not clients. By providing high-quality durable goods and exceptional customer service, our customers always find guaranteed support.

We invest in quality. Using durable high-quality raw materials from the best suppliers around the world, we produce durable, long-lasting, convenient commercial kitchen solutions.

Through the generations, MOG is a tight-knit family of hard working experts, carrying on the legacy,





# HOTLINE EQUIPMENT



**HOTLINE EQUIPMENT**

ELECTRIC RANGE



🔥 Eight burners with two ovens | Size: 160x90x85 cm



🔥 six burners with oven & cabinet storage | Size: 120x90x85 cm



🔥 Two burners with oven & storage cabinet | Size: 80x90x85



🔥 six burner with oven | Size: 120x90x85 cm



🔥 Four burners with oven | Size: 80x90x85



🔥 one burner with storage cabinet | Size: 40x90x85 cm



**HOTLINE EQUIPMENT**

**ELECTRIC RANGE**



🔥 Four burners plus grill with oven

Size: 120x90x85 cm



🔥 six burners counter top

Size: 120x90x30 cm



🔥 gas pot stock stove one burner

Size: 70x70x30 cm



🔥 Two burners counter type

Size: 40x70x30 cm



🔥 gas pot stock stove three burner

Size: 235x90x55 cm



🔥 gas pot stock stove eight burner

Size: 160x90x85 cm

**HOTLINE EQUIPMENT**

**ELECTRIC RANGE**



🔥 eight square plates with two ovens

Size: 160x90x85 cm



🔥 eight rounded plates with two ovens

Size: 160x90x85 cm



🔥 Four square plates with oven

Size: 80x90x85 cm



🔥 six square plates with oven

Size: 120x90x85 cm



🔥 six rounded plates with oven

Size: 120x90x65 cm



🔥 Four rounded plates with oven

Size: 80x90x85 cm

**HOTLINE EQUIPMENT**

ELECTRIC RANGE



🔥 Four square plate counter type

Size:  
80x90x30 cm



🔥 Four rounded plate counter type

Size:  
80x90x30 cm



🔥 two rounded plates counter type

Size:  
40x70x30 cm

**HOTLINE EQUIPMENT**

SOLID TOPS



🔥 Solid top

Size:  
80x90x85 cm

**HOTLINE EQUIPMENT**

**OVENS**



🔥 convection oven

Size:  
90x90x85 cm



🔥 three decks oven

Size:  
80x90x170 cm



🔥 two decks oven with lower proofing cabinet

Size:  
80x90x170 cm



🔥 two decks oven

Size:  
80x90x170 cm



🔥 two decks pizza oven

Size:  
90x105x170 cm



🔥 one deck pizza oven

Size:  
125x150x70 cm



**HOTLINE EQUIPMENT**

**OVENS**

🔥 sweet potato oven



🔥 rotary oven  
Size: 134x170x220 cm



**BAIN MARIE**

🔥 bain marie  
2gn 1/1  
Size: 40x70x85 cm



🔥 bain marie with lower normal or hot cabinet  
Size: 150x70x85 cm



🔥 bain marie - counter type  
gn 1/1 & 2 gn 2/1  
Size: 80x70x30 cm



**HOTLINE EQUIPMENT**

**FRYERS GAS & ELECTRIC**



🔥 fryer with 3 bowls (gas/ electric)

Size: 120x90x85 cm



🔥 fryer with 2 bowls (gas/ electric)

Size: 80x90x85 cm



🔥 fryer with 1 bowl (gas/ electric)

Size: 120x90x85 cm



🔥 fryer with 1 bowl counter type (gas/ electric)

Size: 40x70x30 cm



🔥 fryer with 2 bowls counter type (gas/ electric)

Size: 80x70x30 cm



🔥 fryer with 1 bowl decorated (gas)

Size: 125x150x170 cm

## HOTLINE EQUIPMENT

### TILTING PANS GAS & ELECTRIC

🔥 tilting brat  
pan gas/ elect  
120/ 100/ 80 lit

Size:  
80x90x85 cm



🔥 tilting  
bratt pan  
automatic

Size:  
120x90x85 cm



### BOILING PANS GAS & ELECTRIC

🔥 boiling pan  
gas/ electric

Size:  
Diameter 120 cm



🔥 Boiling pan  
gas/ electric  
300/ 150 lit

Size:  
80x90x85 cm



🔥 boiling pan  
automatic

Size:  
120x90x85 cm



**HOTLINE EQUIPMENT**

PASTA COOKER



🔥 pasta cooker  
(gas/ electric)

Size:  
80x90x85 cm



🔥 pasta cooker  
automatic

Size:  
110x110x85 cm



🔥 proofing cabinet  
several dim n

Size:  
120x220x220 cm  
trolleys 2 2/1



🔥 salamander

Size:  
40x35x40cm



🔥 carving station

Size:  
40x65x65 cm



🔥 water boiler

Size:  
20/ 30/ 60 lit



## HOTLINE EQUIPMENT

### SNACK LINE



🔥 snack line  
several dimn.

Size:  
160x70x85 cm



🔥 snack line  
several dimn.

Size:  
250x70x85 cm

### CANTILEVER SYSTEMS



🔥 cantilever  
systems  
several dimn.

Size:  
235x150x90 cm

### RICHOS



🔥 richos several  
dimn.

Size:  
100x60x65 cm



**HOTLINE EQUIPMENT**

INTEGRATED MOBILE KITCHEN



**NOW START YOUR PROJECT**



## HOTLINE EQUIPMENT

### COMPLETE PIZZA PREPERATION LINE



Get your pizza in 7 mins only



prepare 3 kinds of pizzaz at the same time; seafood, meat & vegetables



### MAKE-UP TABLE

Shooting fpr sandwiches.

small rfrigerator.

table for sandwich  
preperation.

shelves for storage.



# **COLDLINE EQUIPMENT**





**COLDLINE EQUIPMENT**

UPRIGHT REFRIGERATED CABINETS



❄️ double door  
st/ st refrigerator

Size:  
136x80x220 cm



❄️ double door  
glass refrigerator

Size:  
136x80x220 cm



❄️ single door  
st/ st refrigerator

Size:  
70x80x220 cm



❄️ single door  
glass refrigerator

Size:  
70x80x220 cm



❄️ four door  
st/ st refrigerator

Size:  
136x80x220 cm



❄️ three door  
st/ st refrigerator

Size:  
136x80x220 cm

## COLDLINE EQUIPMENT

### UPRIGHT REFRIGERATED CABINETS



single door  
glass refrigerator

Size:  
70x80x  
220 cm



four door st/  
st refrigerator

Size:  
136x80x  
220 cm



### COUNTER REFRIGERATORS



counter  
refrigerator  
with one door

Size:  
120x70x85 cm



counter  
refrigerator  
with two doors

Size:  
150x70x85 cm



counter refrigerator  
with three doors

Size:  
185x70x85 cm

**COLDLINE EQUIPMENT**

COUNTER REFRIGERATORS



❄ counter refrigerator  
with four doors

Size:  
225x70x85 cm



❄ six burners  
counter top

Size:  
120x90x30 cm



❄ counter refrigerator  
with drawers

Size:  
235x70x85 cm



❄ pizza refrigerator  
with marble top surface

Size:  
150x70x85 cm



❄ counter refrigerator  
with two doors - glass

Size:  
150x70x85 cm



❄ counter refrigerator  
with three doors  
- glass

Size:  
185x70x85 cm

**COLDLINE EQUIPMENT**

PANORAMA REFRIGERATORS



❄️ eight burners with two ovens | Size: 160x90x85 cm



❄️ six burners with oven & cabinet storage | Size: 120x90x85 cm



❄️ four burners with oven | Size: 80x90x85 cm



❄️ six burner with oven | Size: 120x90x85 cm



❄️ two burners with oven & storage cabinet | Size: 120x90x85 cm



❄️ one burner with storage cabinet | Size: 40x90x85 cm

**COLDLINE EQUIPMENT**

PANORAMA REFRIGERATORS



❄️ super market refrigerator



❄️ ice cream refrigerator



❄️ fish refrigerator



❄️ gas pot stock stove  
one burner



❄️ panorama refrigerator



**COLDLINE EQUIPMENT**

SALAD REFRIGERATORS



❄️ salad refrigerator

Size:  
160x90x85 cm



❄️ salad refrigerator

Size:  
200x80x90 cm



❄️ salad refrigerator

Size:  
150x70x85 cm



❄️ counter type



❄️ counter type

**COLDLINE EQUIPMENT**

BUFFET SYSTEM



❄️ dessert display buffet



❄️ dessert display buffet



❄️ cold salad display



❄️ salad refrigerator buffet system



**COLDLINE EQUIPMENT**

COLD ROOMS



**COLDLINE EQUIPMENT**

WATER COOLERS



❄️ water cooler 3 taps

Size:  
90x55x170 cm



❄️ water cooler 2 taps

Size:  
90x55x170 cm



❄️ water cooler 1 taps

Size:  
90x55x170 cm



# NEUTRAL LINE EQUIPMENT



**NEUTRAL LINE EQUIPMENT**

WORK TABLES



work table with  
upstand & lower shelf

Size:  
150x70x85 cm



island work table  
with lower shelf & four  
casters

Size:  
150x70x85 cm



fish preparation  
table

Size:  
185x70x80 cm



meat preparation  
table

Size:  
185x70x85 cm



vegetable preparation  
table

Size:  
185x70x80 cm



outlet table

Size:  
150x75x85 cm

## NEUTRAL LINE EQUIPMENT

### WORK TABLES



work table with  
garbage hole

Size:  
180x80x85cm



wotk table with  
upper rack shelf

Size:  
185x70x85 cm



work table with  
drawers

Size:  
185x70x80 cm

## NEUTRAL LINE EQUIPMENT

### FISH SHOW TABLES



**NEUTRAL LINE EQUIPMENT**

SINK UNITS



sink - one bowl

Size:  
150x70x85 cm



sink - two bowl

Size:  
150x70x85 cm



inlet sink

Size:  
150x70x85 cm



sink - hand wash

Size:  
50x50x35 cm



sink - hand wash  
foot operational

Size:  
50x50x85 cm

**NEUTRAL LINE EQUIPMENT**

CUPBOARDS



sliding cupboards  
normal/ hot

Size:  
150x70x85 cm



wall sliding cupboards

Size:  
150x35x60 cm



wall cupboards  
with doors

Size:  
120x35x60 cm

**NEUTRAL LINE EQUIPMENT**  
KITCHEN & SERVICE TROLLEYS



heated banquet trolley | Size:  
130x70x150 cm



laundry trolley | Size:  
120x60x160 cm



laundry trolley | Size:  
60x90x90 cm



tray carrying trolley | Size:  
65x70x160 cm



basket trolley | Size:  
51x51x90 cm



plate trolley | Size:  
80x60x90 cm



**NEUTRAL LINE EQUIPMENT**  
KITCHEN & SERVICE TROLLEYS



dirty dish collect trolley | Size:  
60x90x85 cm



tays trolley | Size:  
80x60x90 cm



service trolley  
three shelves | Size:  
60x90x85 cm



service trolley  
two shelves | Size:  
60x90x85 cm



plat form  
service trolley | Size:  
60x100x90cm



meat hanger  
trolley | Size:  
80x60x90 cm

**NEUTRAL LINE EQUIPMENT**

KITCHEN & SERVICE TROLLEYS



waste trolley

Size:  
50x50x65 cm



flour & sugar  
trolley

Size:  
50x50x85 cm



flour & sugar  
trolley

Size:  
60x80x85 cm



trolley wet wash  
sink with drain  
& tap

Size:  
60x80x90 cm



**NEUTRAL LINE EQUIPMENT**

SHELVING UNITS & WALL SHELVES



shelving unit with striped shelves

Size: 100x50x180 cm



shelving unit with solid shelves

Size: 185x50x180 cm



shelving unit with solid shelves

Size: 120x50x180 cm



wall shelves single / double

Size: 150x30x50 cm



**NEUTRAL LINE EQUIPMENT**

VENTILATION HOODS



island hoods

Size:  
300x250x50 cm



wall hoods

Size:  
250x120x35 cm



decorative hoods

Size:  
340x120x50 cm

## NEUTRAL LINE EQUIPMENT

### STAINLESS STEEL INSULATED DOOR

OPERATION ROOMS

KITCHENS

INSULATED AREAS

HOSPITAL

---

New designs for hospitals.  
Doors are made of stainless steel  
AISI-304A. High density expendable  
polyurethane.  
Super standard hygiene & safety.  
Available at different dimensions.  
Highest performance quality standards.  
Panal thickness 50mm.

Ease & speed of installation guaranteed  
by the fact that doors are easily  
dismantled.

Available as manually operated, & full  
automatic versions as an option.

Thermal & sound insulation.



single door

Size:  
1500x2000 cm

double leaf  
door

Size:  
740x2000 cm



**NEUTRAL LINE EQUIPMENT**

**DRAINS**



**CUTTING BLOCKS**



drawers

Size:  
40x70x85 cm



cutlery dispenser

Size:  
70x70x170 cm

**NEUTRAL LINE EQUIPMENT**

CHAIRS & TABLES



waiting area



cafeteria



restaurant



# WASHING MACHINE

**WASHING MACHINE**

DISH WASHER



under counter type



rack type



front loading type



hood type







# KITCHEN MACHINE



**KITCHEN MACHINE**

MACHINES



bone saw



bread slicers



dough roll machines



dough divider



gravity slicers



dough sheeter

**KITCHEN MACHINE**

MACHINES



dough mixers



food processors



planetary mixers



meat mincers



vegetable peelers



vegetable peelers

**KITCHEN MACHINE**

MACHINES



ball blenders



coffee grinders



espresso coffee machines



milk shakers



hand blenders



orange juicers

**KITCHEN MACHINE**

MACHINES



Potato Chippers



vacuum packing machines



vegetable cutters



vegetable washers



vegetable slicers



crepe machines

**KITCHEN MACHINE**

MACHINES



hamburger press



iron waffle makers



microwave ovens



pop corn machines



knife sanitizer



sandwich grill



**KITCHEN MACHINE**  
MACHINES



soup kettle



sugar candy machines



sausage filler machines



scales



**KITCHEN MACHINE**  
DOMESTIC KITCHENS

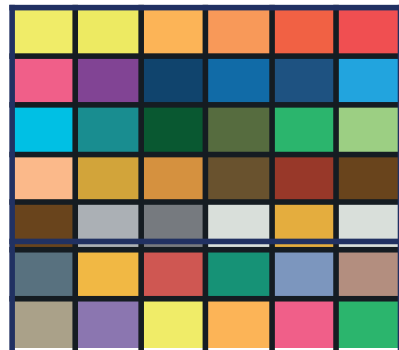


The best way to customize your dream kitchen

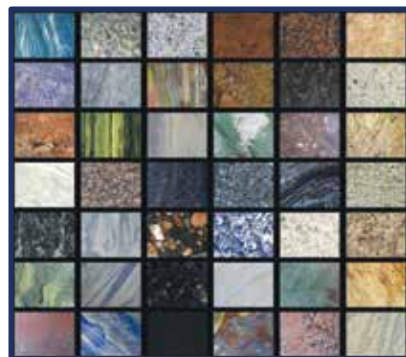


Ultimate storage solutions

**KITCHEN MACHINE**  
DOMESTIC KITCHENS



Choose from our unlimited colors & marbles



Enjoy the best designs & quality for your kitchen.  
Find a great variety of kitchen designs

## BRANCHES

### Management and Main Showroom

#### الإدارة والمعرض الرئيسي

📍 Nasr City, 6<sup>th</sup> District,  
el da'em str., Block 9, Cairo, Egypt.  
مدينة نصر، الحي السادس، المنطقة الصناعية، قطعة رقم ١، شارع  
المخيم الدائم، بلوك رقم ٩.

☎ +2 02 238 10 392 - +2 02 238 10 398

📠 +2 02 238 10 393      **Hot Line : 19547**

📞 Customer service : +2 012 844 22 990 - +2 01006671443

✉ mog.nc.10th@gmail.com - sales@moggroup.net

Management@moggroup.net

🌐 www.moggroup.net

### Factory & Showroom

#### المصنع و المعرض

📍 10 th of Ramadan City, Industrial area (A2) part 8/6 East  
مدينة العاشر من رمضان، المنطقة الصناعية ٢، القطعة شرق ٨/٦

☎ +2 055 44 130 26 - +2 55 44 130 27

📠 +2 055 44 130 27

☎ 19547





60  
سنة خبرة

INDUSTRIAL KITCHEN PIONEER



INDUSTRIAL KITCHEN PIONEER

SINCE  
1961 | 19547